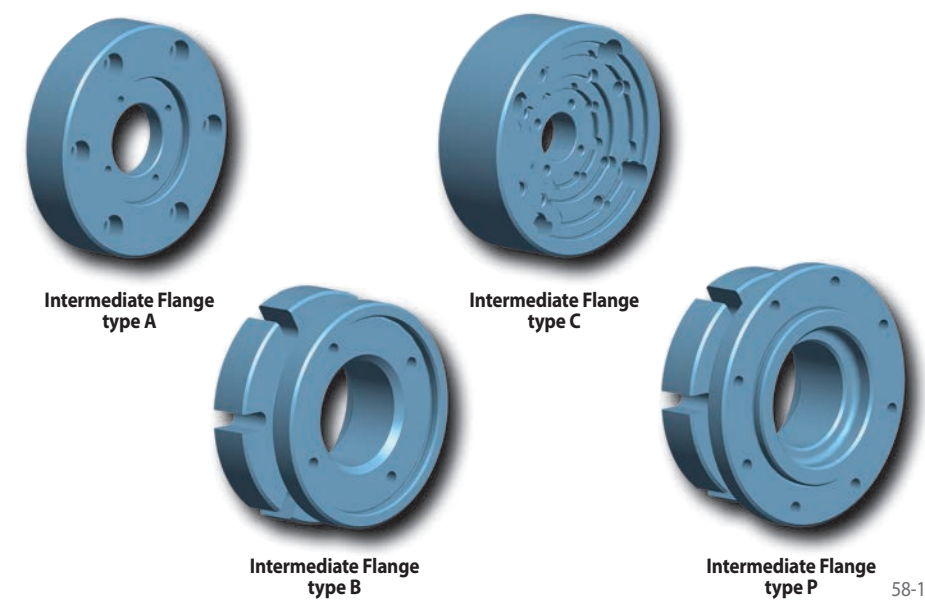


Intermediate Flanges Z ...

for machine connections in accordance to DIN 55026 Form A

RINGSPANN®



Description

Intermediate Flanges are used as adapters between machine connections in accordance to DIN 55026, sizes A5, A6 or A8 (see the machine connection table) and the RINGSPANN Complete Clamping Fixtures.

Possible combinations are listed in the table below. Accordingly, a given Intermediate Flange can be used for different Complete Clamping Fixtures.

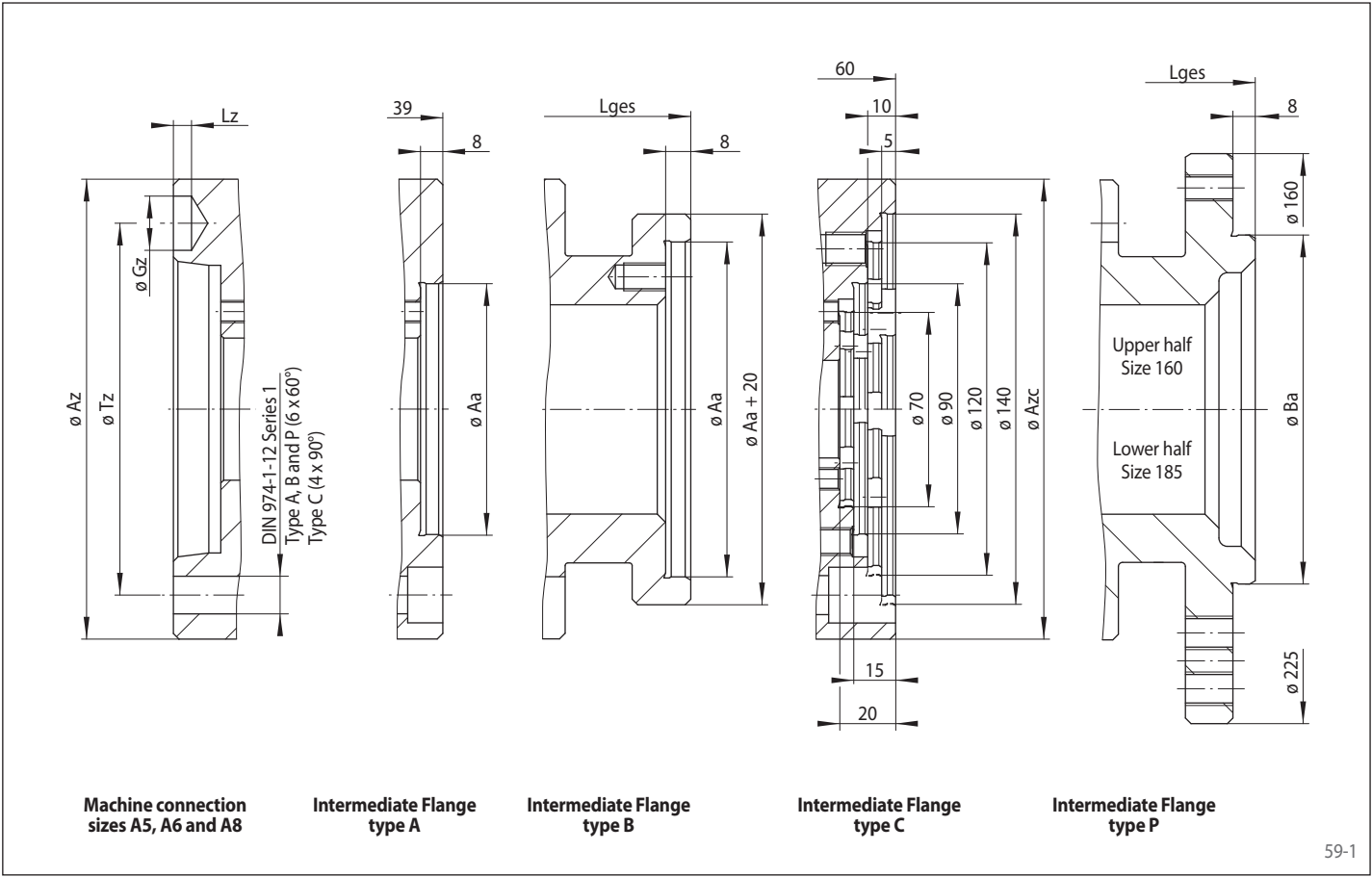
Centring	Intermediate Flange Z			for machine connections in accordance to DIN 55026			for Complete Clamping Fixtures							
	Type	Size	for size Aa* mm	Size A5	Size A6	Size A8	Bonded Disc Pack		Taper Collet		Taper Sleeve		Flat Element	
							Flange Chuck	Flange Mandrel	Flange Chuck	Flange Mandrel	Flange Chuck	Flange Mandrel	Flange Chuck	Flange Mandrel
at outside diameter Aa	A	70	70	✓	✓	✓		LBDF 11		BKDF 6 BKDF 7 BKDF 12 BKDF 18				
		90	90		✓	✓	LAFF 22 LAFF 32	LBDF 15 LBDF 20 LBDF 25	BKFF 35	BKDF 19 BKDF 27		HKDF 4 HKDF 6 HKDF 7 HKDF 12		
		120	120			✓	LAFF 42	LBDF 30 LBDF 35 LBDF 40 LBDF 45	BKFF 44 BKFF 56	BKDF 32	HKFF 40 HKFF 45 HKFF 50	HKDF 19		
	B	90	90	✓			LAFF 22 LAFF 32	LBDF 15 LBDF 20 LBDF 25	BKFF 35	BKDF 19 BKDF 27		HKDF 4 HKDF 6 HKDF 7 HKDF 12		
		120	120	✓	✓		LAFF 42	LBDF 30 LBDF 35 LBDF 40 LBDF 45	BKFF 44 BKFF 56	BKDF 32	HKFF 40 HKFF 45 HKFF 50	HKDF 19		
		140	140	✓	✓	✓	LAFF 52	LBDF 50		BKDF 43 BKDF 44 BKDF 54	HKFF 66 HKFF 76			
	C	70	70 90 120 140	✓	✓	✓	LAFF 22 LAFF 32 LAFF 42 LAFF 52	LBDF 11 LBDF 15 LBDF 20 LBDF 25 LBDF 30 LBDF 35 LBDF 40 LBDF 45 LBDF 50	BKFF 35 BKFF 44 BKFF 56	BKDF 6 BKDF 7 BKDF 12 BKDF 18 BKDF 19 BKDF 27 BKDF 32 BKDF 43 BKDF 44 BKDF 54	HKFF 40 HKFF 45 HKFF 50 HKFF 66 HKFF 76	HKDF 4 HKDF 6 HKDF 7 HKDF 12 HKDF 19		
	P	160	160	✓	✓	✓	LAFF 62	LBDF 60 LBDF 70	BKFF 79		HKFF 86 HKFF 96	HKDF 30 HKDF 40		
		185	185 200 225	✓	✓	✓	LAFF 80 LAFF 90 LAFF 100	LBDF 80 LBDF 90 LBDF 100	BKFF 110		HKFF 106 HKFF 114 HKFF 124 HKFF 134 HKFF 150	HKDF 60	KFFF 110 KFFF 120 KFFF 130 KFFF 140	KFDF 110 KFDF 120 KFDF 130

* Corresponds to diameter Aa of the Precision Clamping Fixture.

Intermediate Flanges Z ...

for machine connections in accordance to DIN 55026 Form A

RINGSPANN®



Machine connections in accordance to DIN 55026				
Size	Az mm	Gz mm	Lz mm	Tz mm
A5	135	16,3	6,5	104,8
A6	165	19,45	6,5	133,4
A8	210	24,2	8,0	171,4

Intermediate Flange Z Type B for centring at outside diameter Aa				
Size Aa mm	A5 Lges mm	A6 Lges mm	A8 Lges mm	
90	74			
120	74	75		
140	74	75	81	

Intermediate Flange Z Type P for centring in bore diameter Ba				
Size Aa mm	Ba mm	A5 Lges mm	A6 Lges mm	A8 Lges mm
160	90	74	76	87
185 200 225	125	78	80	87

Intermediate Flange Z Type C for centring at outside diameter Aa				
Size	for size Aa mm	A5 Azc mm	A6 Azc mm	A8 Azc mm
70	70 90 120 140	160	165	210

Mounting

We recommend using bolts with strength class 10.9 to mount the Clamping Fixture to the Intermediate Flange and the Intermediate Flange to machine connection.

Example for ordering types A, B and C

Intermediate Flange Z, type C for centring at outside diameter Aa, for machine connections in accordance to DIN 55026 size A8, for size Aa of 120 mm:

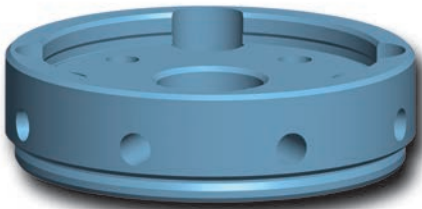
- ZCA8 70

Example for ordering type P

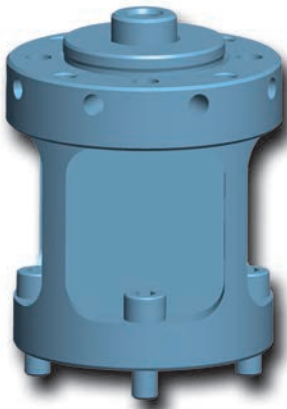
Intermediate Flange Z, type P for centring in bore diameter Ba, for machine connections in accordance to DIN 55026 size A6, for size Aa of 185 mm:

- ZPA6 185

Balancing machine components



Intermediate Flange Z
Type D



Spring Force Actuator
FUSR

Increasingly demanding requirements for balancing accuracy make precise balancing procedures an absolute must.

RINGSPANN Intermediate Flanges for manual clamping and Spring Force Actuators for automated serial production conform to these high standards.

As adapters, they connect the RINGSPANN Precision Clamping Fixture with the balancing machine spindle. The spindle connection conforms to the standard set for Schenck RoTec balancing machines.

60-1



Application example

This example shows the components in use on a Schenck RoTec balancing machine. During the balancing operation, the component remains clamped in place by spring force. To release and change components, the machine-side plunger counteracts the spring force in the idle mode and releases the clamping system.

- 1 Spring Force Actuator FUSR
- 2 Taper Collet Flange Mandrel
- 3 Optional backstop ring

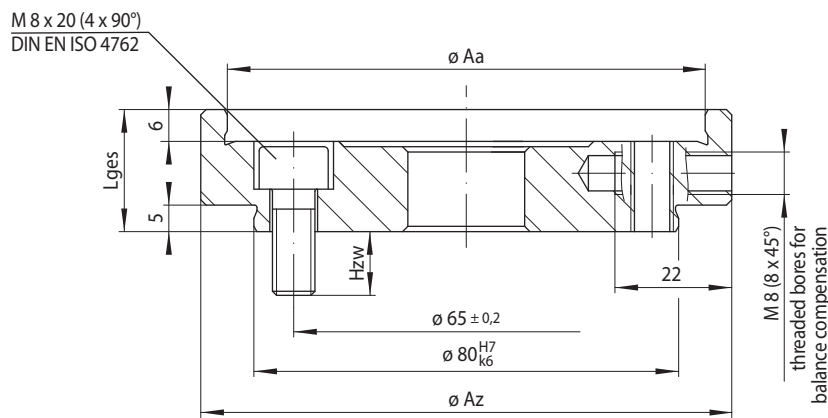
60-2

Source: Schenck RoTec vertical balancing machine in a production line

Intermediate Flanges Z Type D

RINGSPANN®

for manual clamping
for machine connections of balancing machines



61-1

Intermediate Flange Z		for Complete Clamping Fixtures			Az	Hzw	Lges
Type	Size Aa	Taper Sleeve Flange Chuck	Bonded Disc Pack Flange Mandrel	Taper Collet Flange Mandrel	mm	mm	mm
D	70		LBDF 11	BKDF 6 BKDF 7 BKDF 12 BKDF 18	84	12	23
	90		LBDF 15 LBDF 20 LBDF 25	BKDF 19 BKDF 27	100	12	23
	120		LBDF 30 LBDF 35 LBDF 40 LBDF 45	BKDF 32	130	10	29
	140	HKFF 66 HKFF 76	LBDF 50	BKDF 43 BKDF 44 BKDF 54	150	10	31

Description

Intermediate Flanges Z, Type D connect RINGSPANN Precision Clamping Fixtures to the spindles of balancing machines as adapters. The component is clamped and released by activating the Precision Clamping Fixture manually. The Intermediate Flange is available in four sizes and is capable of large clamping ranges when supplemented by different Precision Clamping Fixtures.

Eight radial threaded bores are provided for the purpose of balancing the Intermediate Flange with Precision Clamping Fixture. The Intermediate Flange is mounted to the machine with four M 8 bolts.

Example for ordering type D

Intermediate Flange Z, type D for balancing machines (SR), with dimension Aa of 90 mm, for centering Taper Sleeve Flange Mandrel BKDF 27 on outside diameter Aa:

- ZDSR 90-BKDF 27